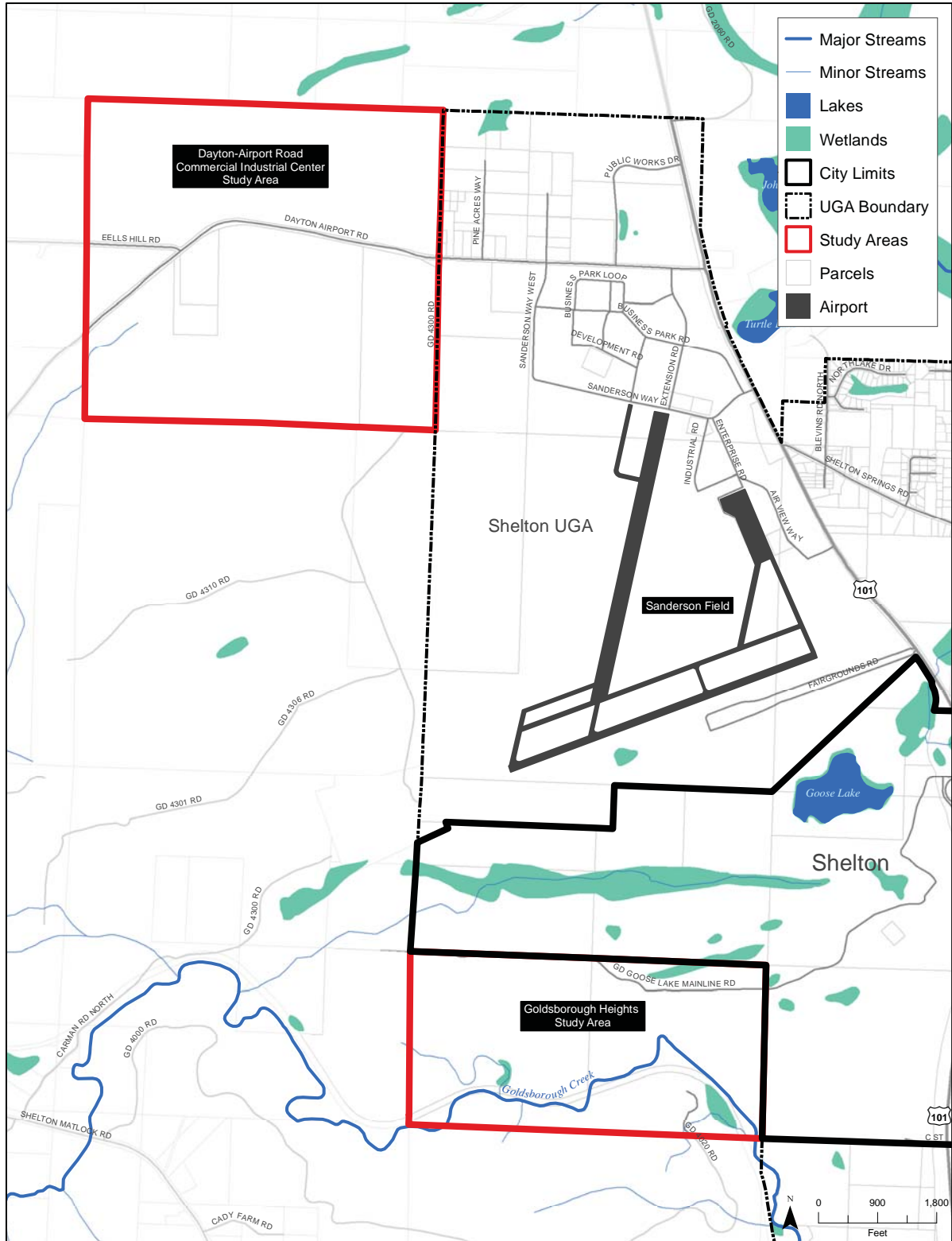


WATER RESOURCES

SURFACE WATER



Source: Mason County, 2016.

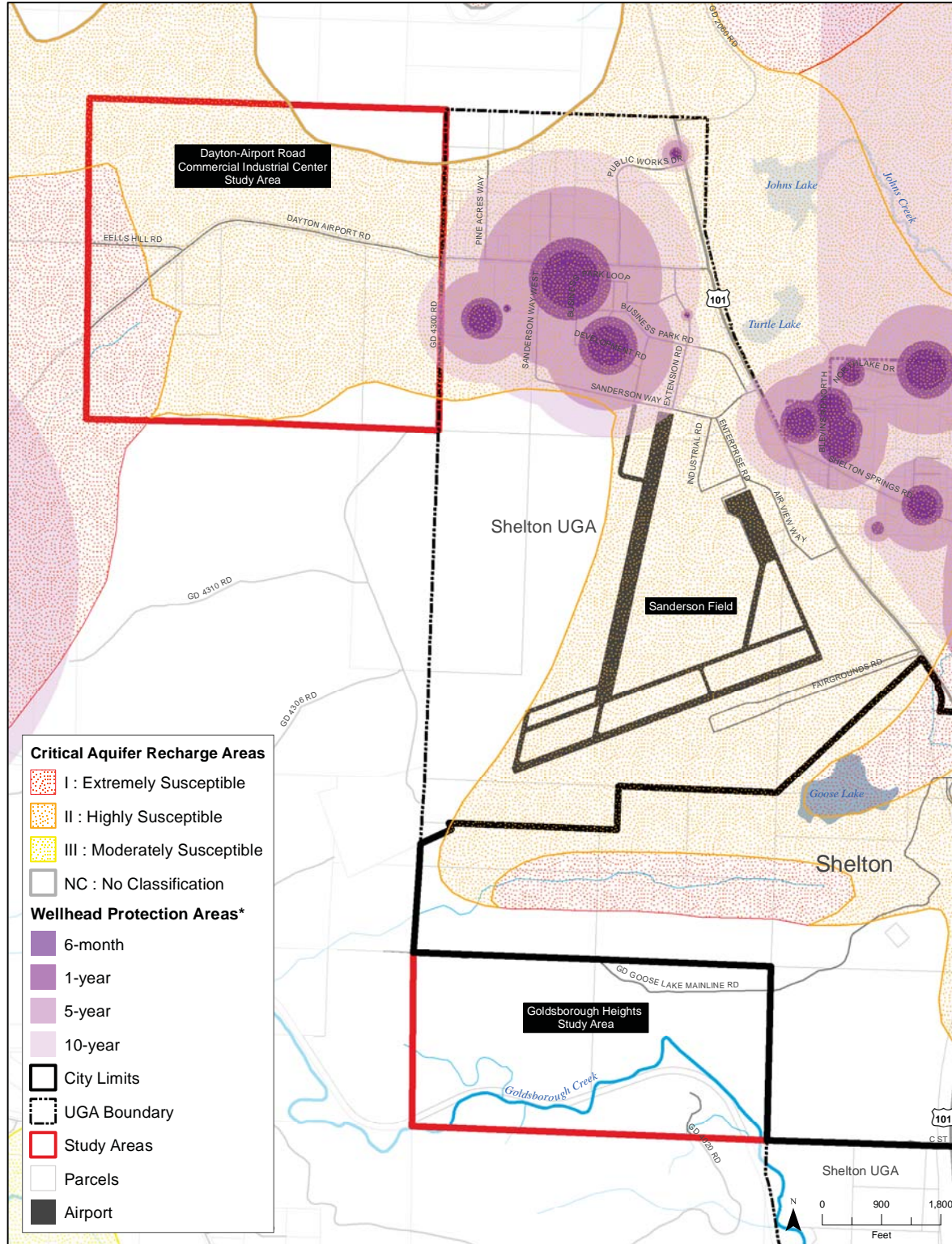
Parametrix
CREATING PLANNING. INSPIRING SCIENCE.

BERK



WATER RESOURCES

GROUNDWATER: WELL HEAD PROTECTION AREAS

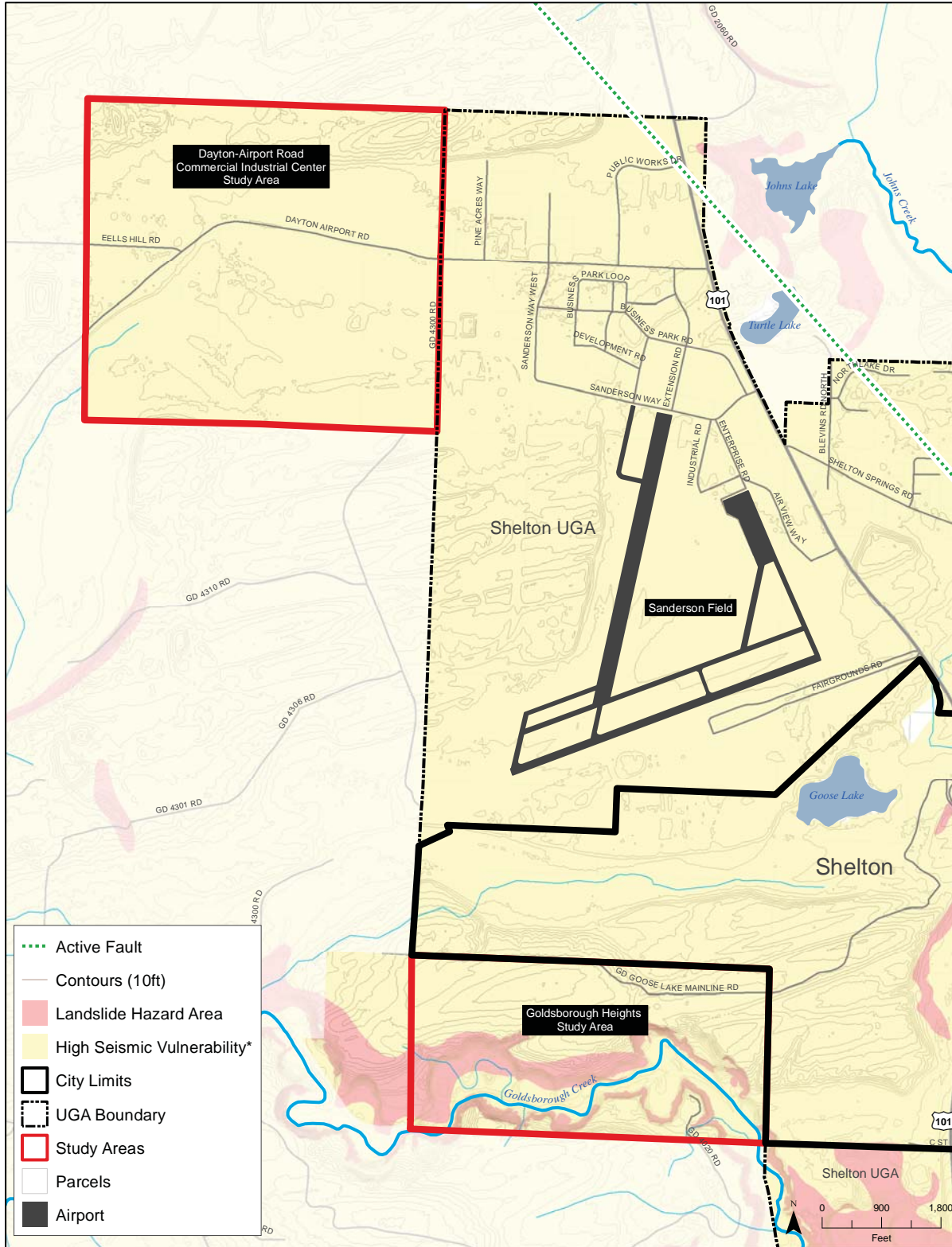


Source: Mason County, 2016. Wash. Dept. of Public Health, 2016*.

Parametrix BERK



GEOLOGIC HAZARD AREAS



Source: Mason County, 2016. Wash. Dept. Natural Resources, 2016.

* According to Seismic Design Classification

Parametrix

BERK

