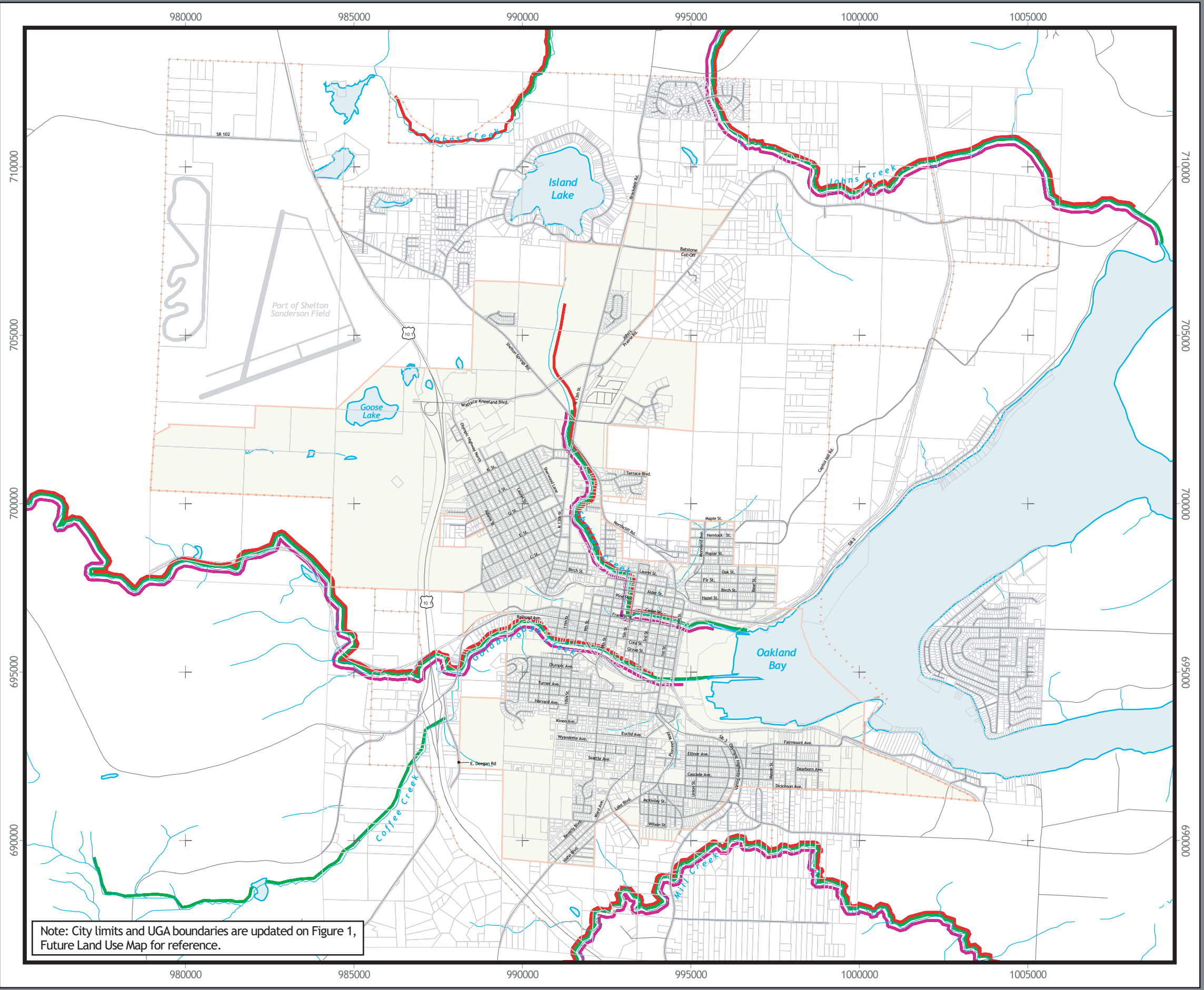


02437.02 H:\PROJECTS\City_of_Shelton\APR\Files\Comprehensive Plan Update.apr (03-16-2004)



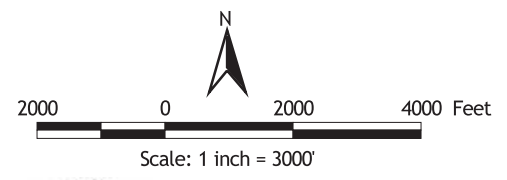
Note: City limits and UGA boundaries are updated on Figure 1, Future Land Use Map for reference.

- Facilities
 - ✚ Barriers
- Anadromous and Resident Fish Distributions**
- ▬ Resident Fish Present
 - ▬ Anadromous Fish Present
 - ▬ Anadromous Fish Spawning
 - ▬ Anadromous Fish Rearing
- ▬ Roads
 - ▬ Streams
 - ▭ Parcels
 - ▬ Urban Growth Boundary
 - ▭ City of Shelton Limits

Description of Map:
Anadromous fish distributions include those stream reaches that are reported by contributors to StreamNet to have anadromous fish present during some part of their life cycle (spawning, rearing, or presence). Resident fish distributions include those stream reaches reported by contributors to Streamnet to contain particular species of fish.

Source of Data:
Washington Department of Fish and Wildlife, from Streamnet, December 2003

Disclaimer:
This information is provided as a public service, and a guide to property owners, potential applicants, and the general public. Additional research and documentation may be required to determine the location and extent of environmentally sensitive areas. No warranty is provided as to the accuracy of the information provided, and the user of this information assumes all risk associated with its use and dissemination.



Jones & Stokes

Figure 10a Anadromous and Resident Fish Distributions