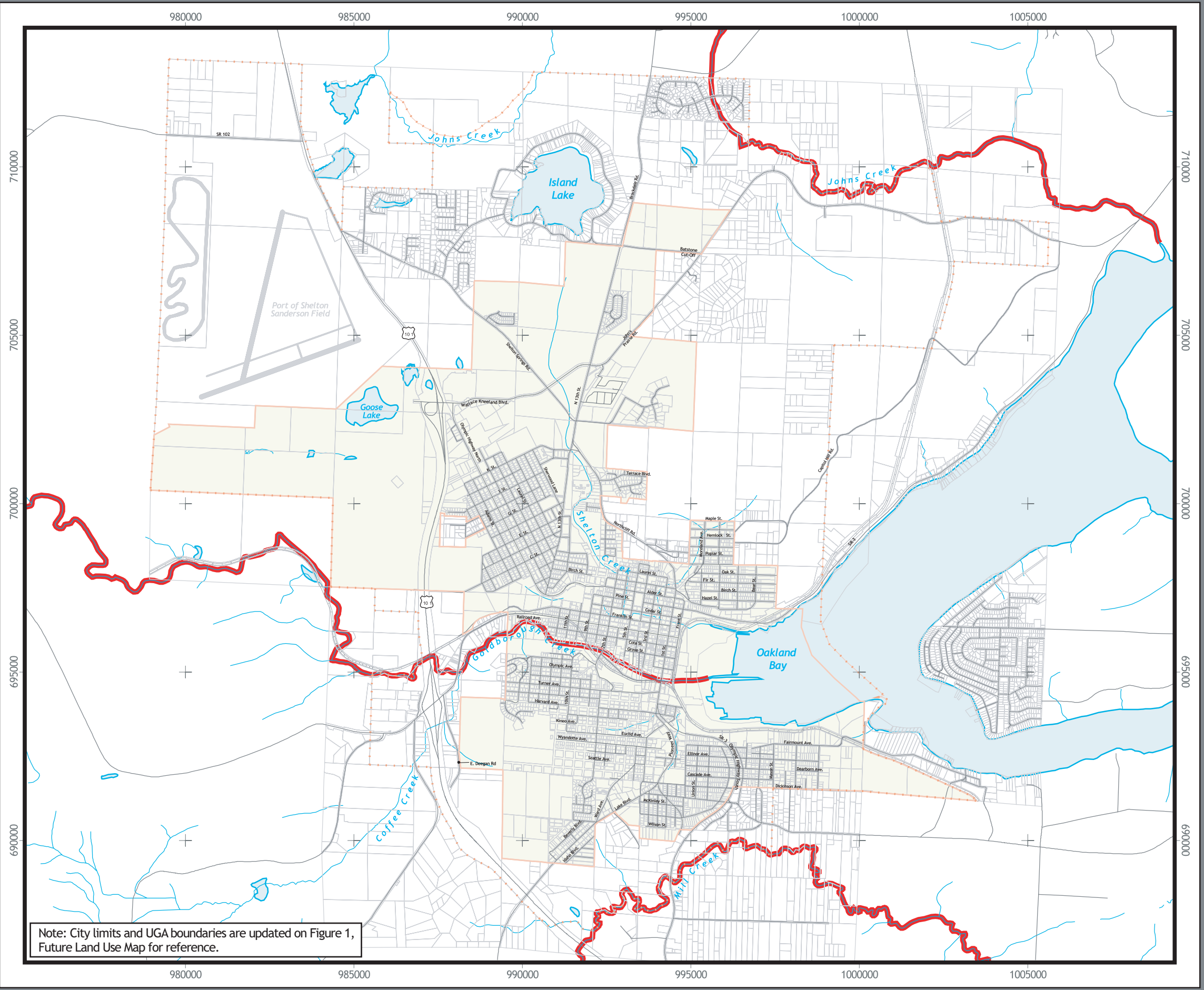


02437.02 H:\PROJECTS\City_of_Shelton\APR\Files\Critical_Areas_Ordinance (03-16-2004)



Note: City limits and UGA boundaries are updated on Figure 1, Future Land Use Map for reference.

Legend

Stream by DNR Stream Type

Stream Type 1

Roads

Streams

Parcels

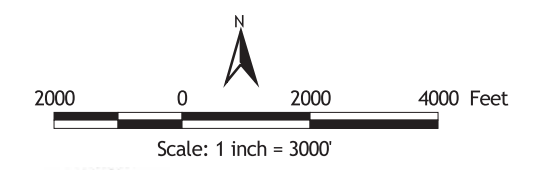
Urban Growth Boundary

City of Shelton Limits

Description of Map:
Potential Fish and Habitat Conservation Areas in Title 21.64.130 include all lands within the city limits which border any types I waters as defined by the Forest Practices Act (WAC 222-16-030) and designated as critical fish and wildlife habitat areas.

Source of Data:
Stream Type: Washington Department of Natural Resources, Forest Practices Division, February 2004

Disclaimer:
This information is provided as a public service, and a guide to property owners, potential applicants, and the general public. Additional research and documentation may be required to determine the location and extent of environmentally sensitive areas. No warranty is provided as to the accuracy of the information provided, and the user of this information assumes all risk associated with its use and dissemination.



Jones & Stokes

Figure 10 Critical Areas Potential Fish and Wildlife Habitat Conservation Areas

City of Shelton
Comprehensive Plan Update
March 2004